

General Description:

- **Location:**
Braddock, PA
- **Profile:**
Braddock Hospital
- **Project:**
Platinum ProgramSM
Exterior masonry restoration

Services Provided:

- **Platinum Program**SM
- BEP/RAMP
- Design Development
- Construction Documents
- Bidding

Challenges:

- Masonry deterioration from age and water exposure
- Aged/deteriorated windows
- Working in active hospital

Solutions:

- Comprehensive restoration program
- Window replacement
- Coordination of work with hospital operations and ICRA Standards

University of Pittsburgh Medical Center *Braddock Hospital*

University of Pittsburgh Medical Center (UPMC) is an integrated global health enterprise and one of the leading nonprofit health systems in the United States, serving the health needs of more than 4 million people each year. UPMC - Braddock Hospital is located in the Pittsburgh metropolitan area.



remediation. All the components on the building envelope and roof asset management programs individually, with all deficiencies being recorded. Once this data was entered, the components were evaluated and rated. At the completion of this process, StructureTec was able to establish realistic budgets for completing the exterior restoration of the building, including window replacement. StructureTec then conferred with the client to establish priorities and determine their long-term objectives. After design development and construction documents were completed, the work was bid to local contractors.



Overview UPMC - Braddock Hospital

The various buildings and wings of UPMC - Braddock Hospital had received little to no maintenance over the years. Masonry components and steel shelf angles had experienced deterioration and degradation. In some areas, significant deterioration and shifting of masonry had occurred. UPMC made decisions to upgrade the deteriorated hospital and allocate the required funding.

StructureTec was contacted to perform an extensive evaluation of the hospital, which included roofs, walls and hardscapes. This evaluation was the first step in establishing priorities for repair and



Overview of the larger crack and extended steel straps at the upper portion of the wall.



Web: www.structuretec.com
Email: geninfo@structuretec.com

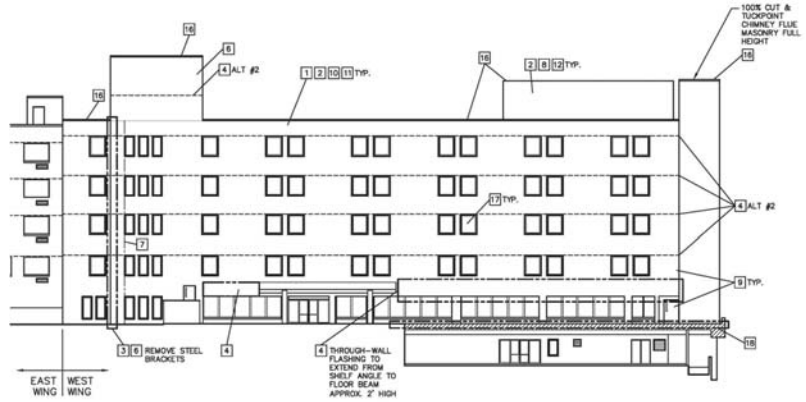
All rights reserved.

In the first year, a temporary stabilization project was completed to address potential safety concerns and stop areas of significant leakage. Following the stabilization project, a comprehensive exterior wall restoration project was completed, including:

- Masonry repairs
- Through-wall flashing replacement
- Sealant replacement
- Cleaning and sealing of masonry
- Window replacement

As part of the window replacement process, Infection Control Risk Assessment (ICRA) requirements were incorporated into the design. StructureTec worked with the Department of Health, as necessary, to obtain the permits as mandated under the ICRA design requirements.

StructureTec became the construction manager (**Platinum Program**SM) for the project, with contracts for both the masonry restoration and window replacement. ■



North Elevation Drawing - Braddock Hospital



Overview of the exploratory opening

FEATURES

Scientific approach to problem solving

StructureScanTM Survey

Increased communication

Platinum ProgramSM

BENEFITS

Eliminated the cause of the problem - not just effect

Depicts substrata conditions not visible to the eye

Allows for coordination with staff

Ensures a total quality process - providing a "turnkey" solution with one point of contact

StructureTec[®] Project Profile

Total Building Envelope Management SolutionSM

www.structuretec.com

(800) 745-7832